

PART OF SW 1/4 OF NE 1/4
SECTION 20, T.6N., R.1W., S.L.B. & M.

114-2

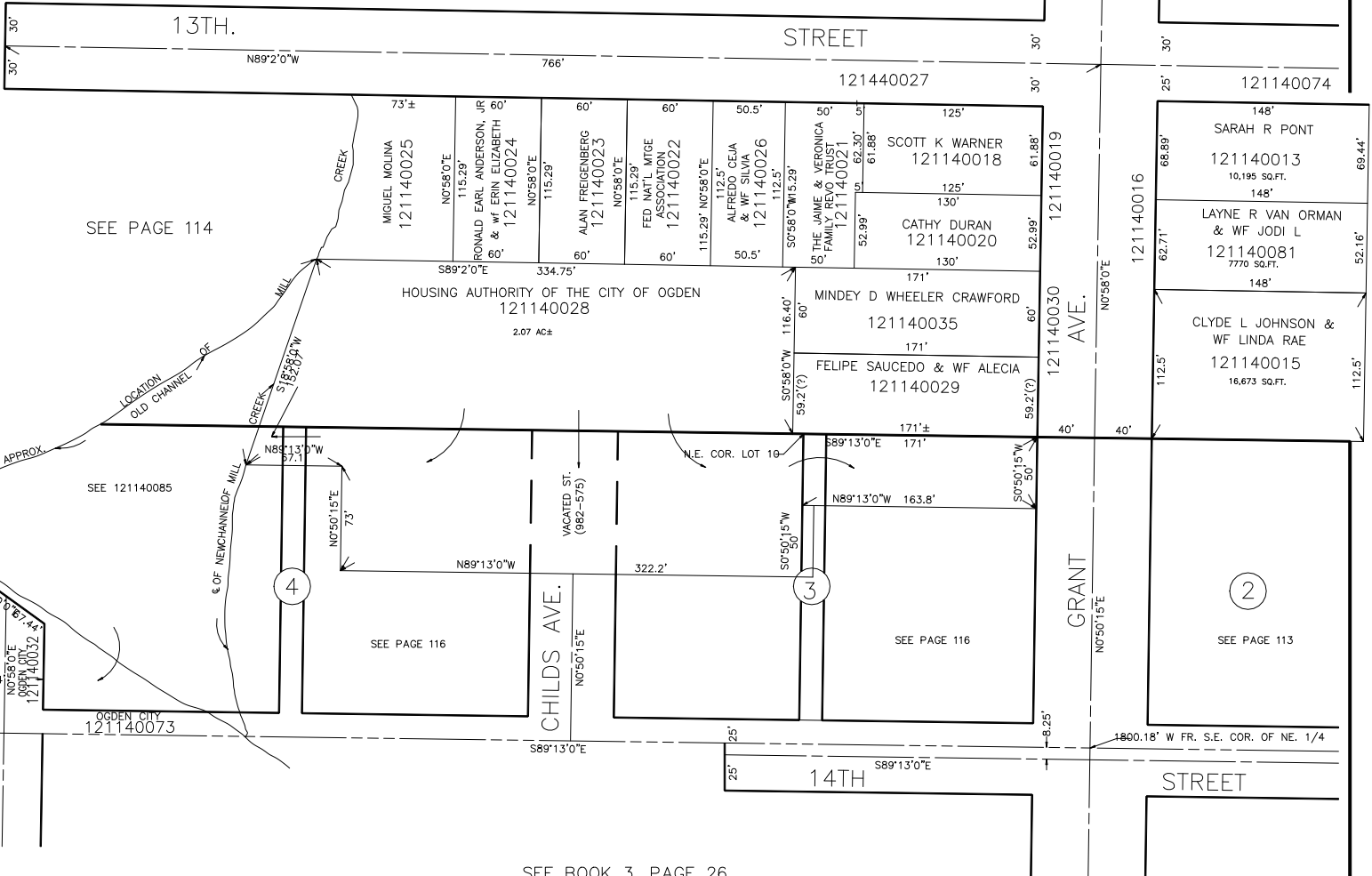
PAGE 115 OMITTED

TAXING UNIT: 25

IN OGDEN CITY
SCALE 1" = 60'

SEE PAGE 114-1

SEE PAGE 112



SEE PAGE 114

SEE 121140085

SEE PAGE 116

SEE PAGE 116

SEE PAGE 113

SEE BOOK 3, PAGE 26

SEE PAGE 110-2

LINCOLN AVE
114.57'
N89°10'00"E
121140032

OGDEN CITY
121140073

S89°13'0"E

14TH STREET

14TH STREET

GRANT AVE.

CHILDS AVE.

4

3

2